



Hand made in Italy

WOMEN'S COLLECTION



SIMONA BIT





SIMONA

The Simona is a classic penny loafer that can polish any look. Defined by the traditional penny keeper across the foot that features a distinct cut out, this mature slip-on style remains a symbol of its popular and preppy heritage. Our take features a flattering round toe, low stacked heel, and smooth leather upper.



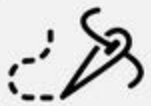
CHIARA

The Chiara is a classic tassel loafer that can polish any look. Defined by the traditional drop tassel across the vamp, this mature slip-on style remains a symbol of its popular and preppy heritage. Our take features a flattering round toe and low stacked heel for all day comfort.



Quality

We manually inspect every single shoe before packaging.



Hand-stitched

Every shoe stitched by hand to ensure the classic aesthetic detailing.

CARLA PENNY LOAFERS

Made with time-tested heritage construction for a luxurious fit and inbuilt comfort and set on our classic leather outsole, this is a shoe that works as well with denim and a shirt as it does with loosely structured spring trousers.



FRANCESCA

BIANCA

ADELE

Women's Italian Leather Shoes

Women's shoes are mostly focused on style and not always on quality. Alfonsi focuses on timeless but modern designs and produces high-quality handmade shoes, offering a wide range of leather shoes for women for every occasion.



GIORGIA

The GIORGIA is a comfortable, lightweight loafer with a casual-chic style that is perfect for the spring/summer season. It features a high-quality, flexible rubber sole and a comfortable enveloping upper, and its timeless, understated elegance makes it stand out.



MARIA





PAOLA



PAOLETTA



MARTINA



Our Carlotta Chelsea Boots are handcrafted by skilled artisans in Italy, using a British last, with accustomed Alfonsi quality. The high-quality rubber sole, provides a contrast to its heavy look and makes the shoe extremely lightweight and resistant against any weather conditions. The boots are made of high-quality black polished calfskin. It is equipt with a canvas loop on the shaft which not only lends the boots special touch but also makes it easier to wear the shoes.

CARLOTTA



ERIKA

Our Erika Chelsea Boots are handcrafted on an Italian shoe last by skilled artisans in our manufactory in Italy . Crafted from high-quality calfskin and a elastic panel. The Chelsea boot is equipt with a black canvas loop on the shaft which not only lends the boots a special touch but also makes it easier to wear the shoes.

- Lining in natural-colored calfskin
- Non-slip rubber half sole





BENEDETTA

Classic lace-up sneaker made from fine white calf nappa leather and grey calf suede ornament. Featuring box stitched rubber sole and memory foam insole.



OLGA



INES

Nappa Leather

As a chrome tanned leather, nappa leather is soft and full pasty hands. The natural characteristics of the animal skin are visible as they have not been obscured by paints and coatings.

Box

Box , our cupsoles are made in the traditional way. The upper is lasted to a soft insole, the cupssole is then secured by stitching around the top of the rim to the upper. This produces a comfortable, practical shoe with a more refined look



AMALIA

Alfonsi

MILANO

Hand made in Italy



NUVOLA



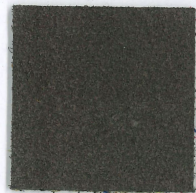
GRIGIO



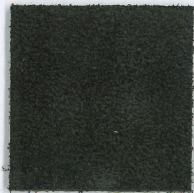
SILVER



DIESEL



TOPO



FUMO



TAUPE



STEPPA



TABACCO



STONE



MOSTARDA



BRUCIATO



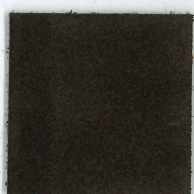
COGNAC



CUOIO



SIGARO



TERRA



GIALLO



MAIS



SENAPE



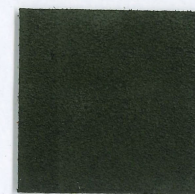
ARANCIO



VERDE



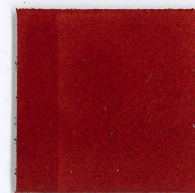
LODEN



BOSCO



PEPE



ROSSO



BAROLO



ROSA



FUXIA



CIELO



CELESTE



AZZURRO



COBALTO



BLU



ROYAL



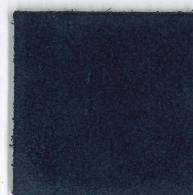
NAVY



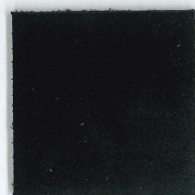
JEANS



INDACO



CERULEO



NERO